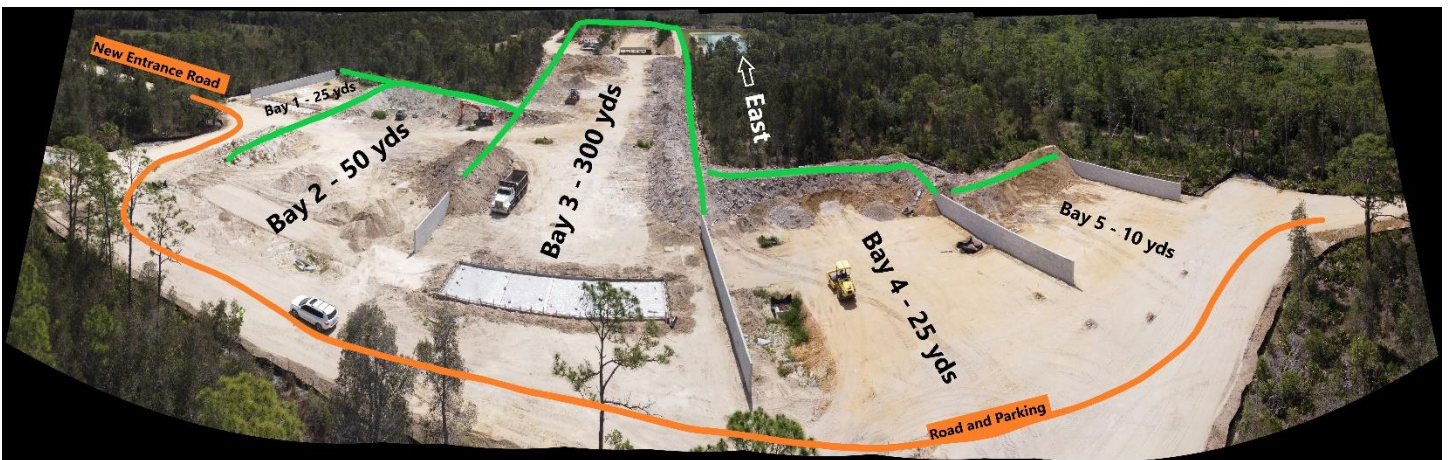


The Bays are starting to take shape!

With these latest photos I've tried to provide a sense of the layout of the new bays, and also the current status. Many images are composites. The advantage of seeing more, is offset by distortion, like from a wide-angle lens.

The most recent drone videos have little of this wide-angle distortion. The link is on the Club's website, and also here directly: https://www.youtube.com/channel/UCx6L_ML4LEKOVrvq5PpyTQw

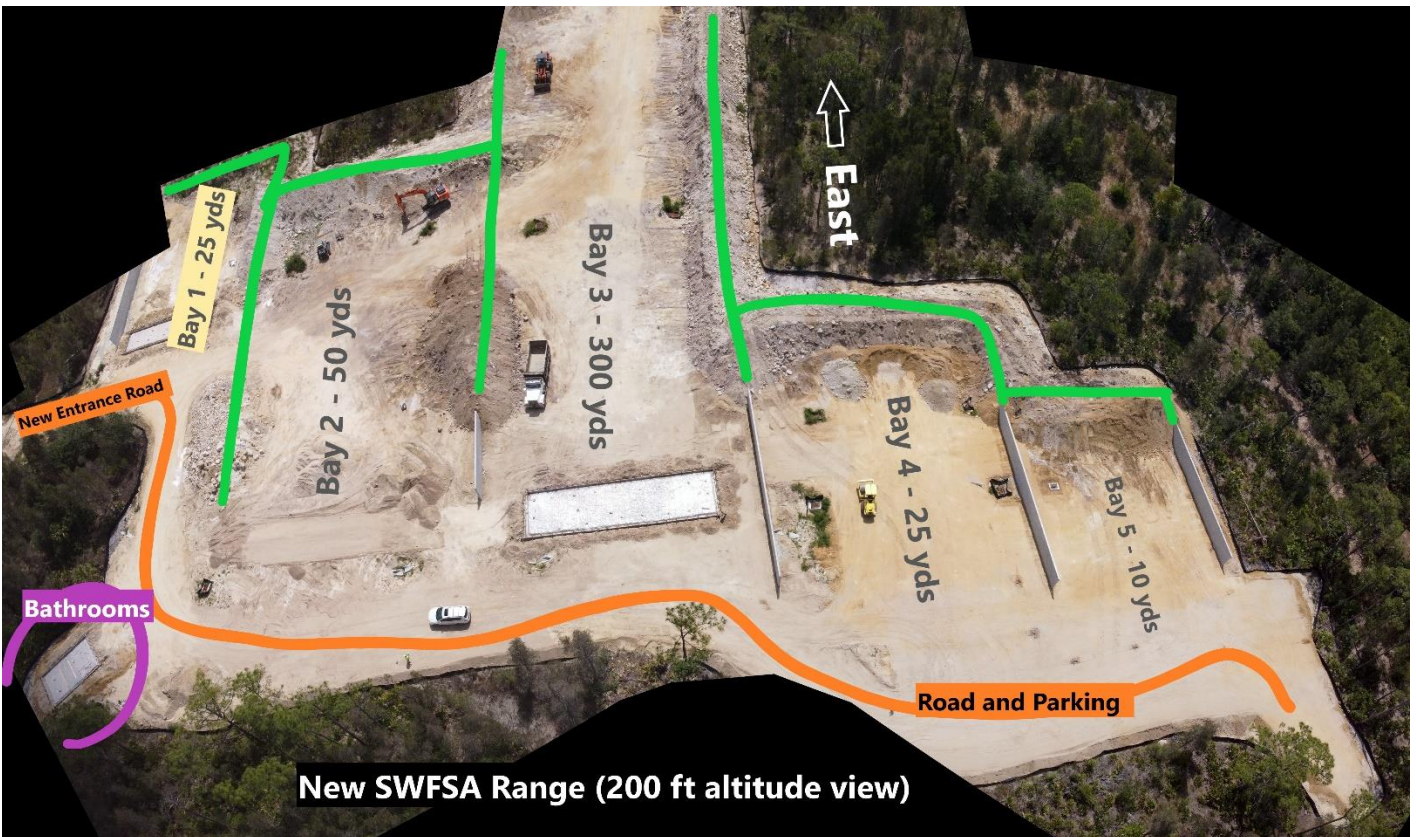
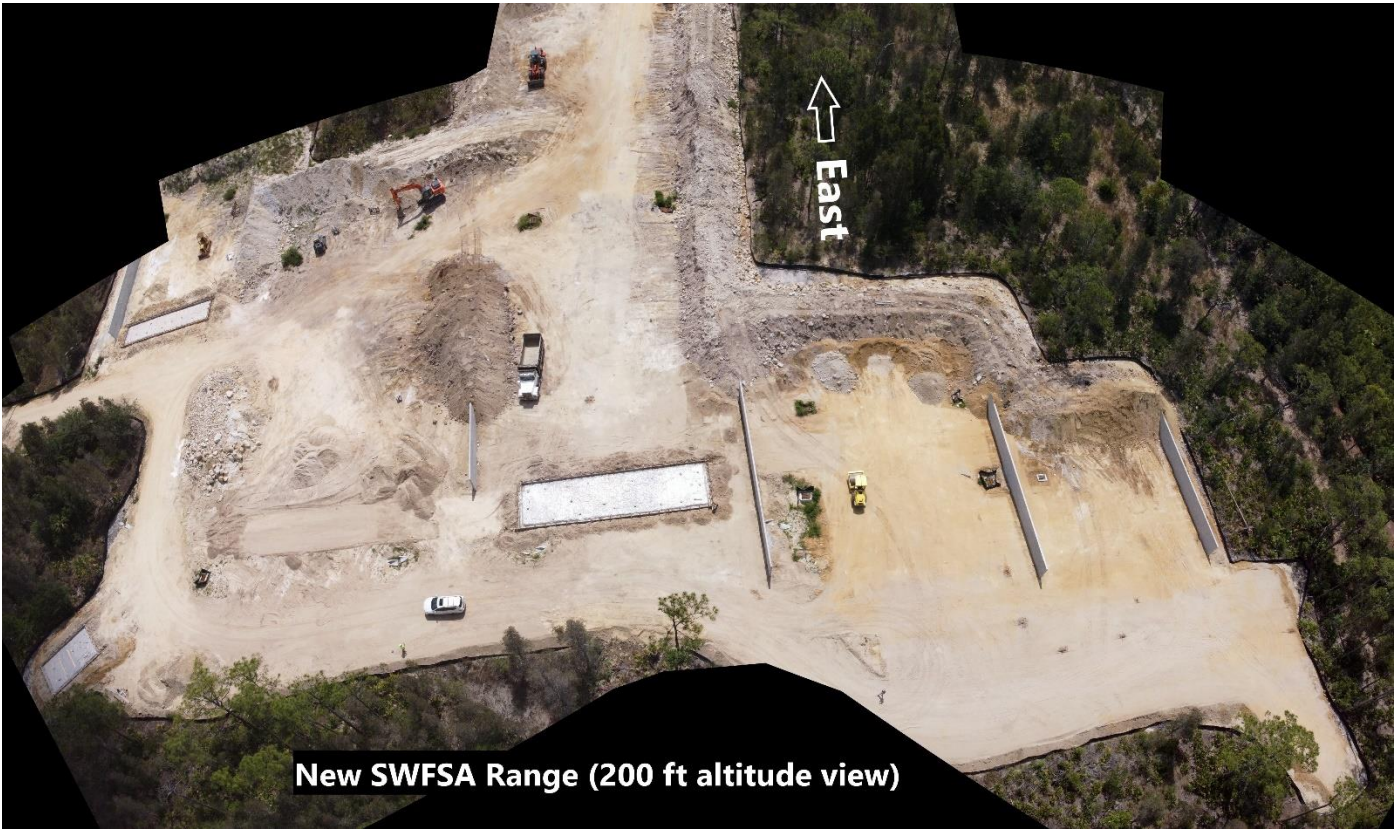
First, a wide-angle of everything looking East, including all of Bay 3 (300 yds):



Now, a similar, but more detailed view, also looking East:



Similar view, from 200 ft altitude:



SWFSA Construction Status Update: 05-11-2020

Finally, several views focusing on Bay 3 (300 yds):

First, looking East from the shooting positions, then looking West from the End Berms of our current Bays.



Now, looking from the opposite end of the new Bay 3 (the End Berm), back towards the shooting positions:





Detailed views of the current status of the Bay 3 end berm—which will be 28 ft high when completed:



Finally: the ground level view of that Bay 3 end berm:

